

How does it work? Who do you contact?

If you, or someone you know would like to talk about the project or see what help we can give let us know.

To find out more for yourself or refer someone to this project please complete the following information and return to EDRCN—address over page.

Name _____

Address _____

Phone: _____

Name (of person referring if
a p p l i c a b l e) _____

Address: _____

Phone of referrer _____

I am happy for someone to contact me about this project.

Signature of person joining project or being referred _____

It's worth a call to find out more about the project and if we can help you. A visit from an enabler does not mean you have to take things any further. Visits will take place over July and August.



Could you be missing out on benefits, services or grants?

East Down Rural Community Network

Ballymote Centre
40 Killough Road
Downpatrick
BT30 6PY

Phone: 028 44 61 23 11

Fax: 028 44 61 14 58

E-mail: pamela@eastdownrcn.com

Also in Partnership with Peninsula Healthy Living Centre.



Public Health Agency



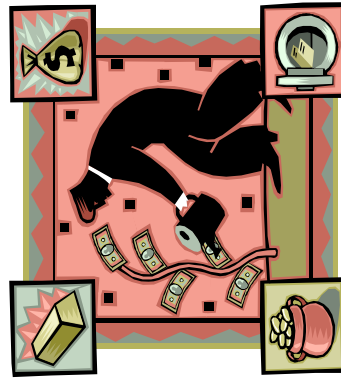
AN ROINN
Talmhaíochta agus
Forbartha Tuaithe
MANNING O
Fáirnis an
Kintre, Fordeáin



East Down Rural Community Network



Maximising Access to Services, Grants and Benefits in Rural Areas



Maximising Access to Services, Grants and Benefits

This project is being run by East Down Rural Community Network and covers areas in

Down—Drumaness village, Castlewellan Town, Tollymore ward (from Bryansford to Kilcoo) and Ardglass.

Ards—Portaferry, Portavogie, Kircubbin, Ballywalter and Millisle.

The project hopes to identify people who are isolated, who need help with finding out more about benefits or help through other grants and services and information about local activities. The project hopes to help **older people, farming families, carers, people with disabilities, lone parents and those living on their own.**



help in filling out forms.

Get help with finding out about grants or benefits or local services.

Find out about groups and local services.

The project is also putting together a directory of local services; information about support groups, local activities, places to get information and advice. When enablers come out to visit you they will give you a pack including information from the directory of services.

